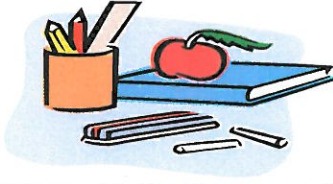


**DEER PARK SCHOOL DISTRICT
BOARD OF EDUCATION
COMMITTEE MTGS/WORK SESSION AGENDA
ADMINISTRATION BUILDING
SEPTEMBER 11, 2012**



5:45 p.m. – Health & Safety Committee Mtg.

6:30 p.m. – S/E, Facilities, Tech, Building Utiliz. Committee Meetings

7:30 p.m. – Work Session

AGENDA ITEMS:

- Committee Meeting Updates
- Approval of Fieldtrip to NYSSMA festival 11/29/12 – 12/2/12
- Agreement with HHH for Emergency Evac. Site
- Aramark Presentation – New regulations
- 3 – 8 testing results & SAT discussion (Ms. Skillen, Dr. Sheridan, Ms. Bonner & Ms. Levey)

NEW BUSINESS:

1. *Recommend that the Board of Education approve the following Resolution:*

APPOINTMENT OF IMPARTIAL HEARING OFFICER

RESOLVED, that the Board of Education approve Mr. Robert Mackreth as an impartial hearing officer.

Percent Passing (level 3+4)				
ELA	Gen	Gen	Gen Ed	Sped
	Ed+SPED	Ed+SPED		
	2011	2012		
3	71.4	67	74	23
4	69.6	72.8	80	39
5	63.7	72.8	82	21
6	65.3	64.3	71	18
7	48	64.7	70	13
8	56.2	53	59	5
All Grades	62	66	73	22
MATH	Gen Ed +	Gen Ed +	Gen Ed	Sped
	SPED	SPED		
	2012	2012		
3	68.6	67.8	74	29
4	74.1	77.5	83	50
5	72.7	78.8	87	37
6	74.7	77.9	83	40
7	76.7	81.2	86	35
8	66.7	75.8	83	21
All Grades	72	76	83	37

3rd Grade English Language Arts			
District Pass Rate 2009-2010	District Pass Rate 2010-2011	District Pass Rate 2010-2012	District Pass Rate 2011-2012
H H Hills	76.3	H H Hills	77.4
Lindenhurst	72.9	Deer Park	74.2
Copiague	65.9	Lindenhurst	70.4
North Bab.	65.6	West Bab.	67/74*
Babylon	65	Copiague	62.8
Deer Park	59.4	Babylon	60
West Bab.	57.4	North Bab.	57
Amityville	51.6	Amityville	34.8
Wyandanch	30.3	Wyandanch	19.5

* Indicates General Education Results without Students with Disabilities

4th Grade English Language Arts			
District Pass Rate 2009-2010	District Pass Rate 2010-2011	District Pass Rate 2010-2012	District Pass Rate 2011-2012
H H Hills	76	H H Hills	76.3
North Bab.	75.2	Deer Park	72.8/80*
Babylon	74.7	West Bab.	72.4
Copiague	72.9	Lindenhurst	67.9
Lindenhurst	72.8	North Bab.	65.9
West Bab.	70.1	Copiague	63.5
Deer Park	61.1	Babylon	58.7
Amityville	41.5	Amityville	38.1
Wyandanch	28.3	Wyandanch	26.4

* Indicates General Education Results without Students with Disabilities

5th Grade English Language Arts			
District Pass Rate 2009-2010	District Pass Rate 2010-2011	District Pass Rate 2010-2012	District Pass Rate 2011-2012
H H Hills	75.1	Babylon	81.9
Deer Park	66.4	H H Hills	72.8/82*
Lindenhurst	65.7	West Bab.	70.2
Babylon	65.4	North Bab.	69.8
North Bab.	59.7	Copiague	63.2
West Bab.	57.7	Deer Park	61.1
Copiague	52.2	Lindenhurst	60.2
Amityville	33.8	Amityville	41.6
Wyandanch	41.8	Wyandanch	34.5

* Indicates General Education Results without Students with Disabilities

3rd Grade Math			
District Pass Rate 2009-2010	District Pass Rate 2010-2011	District Pass Rate 2010-2012	District Pass Rate 2011-2012
H H Hills	80.8	H H Hills	84
Lindenhurst	73.3	Babylon	75.2
Babylon	71.4	Deer Park	69.2
Copiague	63.4	Lindenhurst	67.8/74*
North Bab.	62.3	West Bab.	64.6
West Bab.	61.8	North Bab.	62.3
Deer Park	61	Copiague	56.3
Amityville	46.1	Amityville	41.7
Wyandanch	33.7	Wyandanch	24.7

* Indicates General Education Results without Students with Disabilities

4th Grade Math			
District Pass Rate 2009-2010	District Pass Rate 2010-2011	District Pass Rate 2010-2012	District Pass Rate 2011-2012
H H Hills	84.1	H H Hills	87.4
Lindenhurst	78.3	West Bab.	80.1
North Bab.	75.3	Babylon	77.5/83*
West Bab.	72.5	North Bab.	75
Copiague	70.6	Lindenhurst	73.4
Deer Park	68.1	Deer Park	72.8
Babylon	65.5	Copiague	72.2
Amityville	37.1	Amityville	44.3
Wyandanch	34.2	Wyandanch	35.8

* Indicates General Education Results without Students with Disabilities

5th Grade Math			
District Pass Rate 2009-2010	District Pass Rate 2010-2011	District Pass Rate 2010-2012	District Pass Rate 2011-2012
H H Hills	88.4	H H Hills	86
Deer Park	75.9	West Bab.	78.8/87*
Lindenhurst	74	Copiague	77.8
North Bab.	72.2	Lindenhurst	76
Copiague	71.7	Deer Park	75.5
West Bab.	71.2	Babylon	71.4
Babylon	64.7	North Bab.	70.4
Wyandanch	60	Amityville	57.3
Amityville	54	Wyandanch	52

* Indicates General Education Results without Students with Disabilities

6th Grade English Language Arts			
District Pass Rate 2009-2010	District Pass Rate 2010-2011	District Pass Rate 2010-2011	District Pass Rate 2011-2012
Babylon	77.6	H H Hills	79.7
North Bab.	74.3	Babylon	H H Hills
West Bab.	73.6	West Bab.	71.4
Lindenhurst	72.9	Lindenhurst	65.8
H H Hills	71.8	Deer Park	65.3
Deer Park	69.3	North Bab.	63.4
Amityville	54.2	Amityville	50.4
Copiague	49.5	Copiague	46.5
Wyandanch	35.8	Wyandanch	33.9
			22.2

* Indicates General Education Results without Students with Disabilities

7th Grade English Language Arts			
District Pass Rate 2009-2010	District Pass Rate 2010-2011	District Pass Rate 2010-2011	District Pass Rate 2011-2012
H H Hills	77.5	H H Hills	69
West Bab.	66.2	West Bab.	69
Lindenhurst	61	Babylon	64.7
North Bab.	55.3	Lindenhurst	57.8
Deer Park	54.7	North Bab.	50.3
Babylon	50.4	Deer Park	48
Copiague	41.6	Copiague	34.9
Amityville	35	Wyandanch	33.9
Wyandanch	26.6	Amityville	25.8
			15.1

* Indicates General Education Results without Students with Disabilities

8th Grade English Language Arts			
District Pass Rate 2009-2010	District Pass Rate 2010-2011	District Pass Rate 2010-2011	District Pass Rate 2011-2012
Babylon	86.9	H H Hills	73.3
H H Hills	83.2	Lindenhurst	60.3
West Bab.	80.4	Deer Park	56.2
Lindenhurst	67.5	West Bab.	56
North Bab.	62.3	Babylon	55.1
Deer Park	60.4	North Bab.	52.3
Copiague	47.8	Copiague	43
Amityville	36.4	Amityville	22.8
Wyandanch	27.5	Wyandanch	18.8
			18.7

6th Grade Math			
District Pass Rate 2009-2010	District Pass Rate 2010-2011	District Pass Rate 2010-2011	District Pass Rate 2011-2012
Babylon	89.9	H H Hills	86.4
West Bab.	81.4	Babylon	82.9
H H Hills	79.2	Lindenhurst	77.6
Deer Park	75.5	Deer Park	74.7
Lindenhurst	69.1	West Bab.	74.2
North Bab.	57.7	North Bab.	62.1
Amityville	54.9	Amityville	61
Copiague	49.5	Copiague	54.9
Wyandanch	31.1	Wyandanch	20.9
			13.4

* Indicates General Education Results without Students with Disabilities

7th Grade Math			
District Pass Rate 2009-2010	District Pass Rate 2010-2011	District Pass Rate 2010-2011	District Pass Rate 2011-2012
H H Hills	88	H H Hills	88.8
Deer Park	80.2	West Bab.	82.4
West Bab.	70.8	Babylon	79.3
Babylon	70.7	Lindenhurst	77.3
Lindenhurst	70.4	Deer Park	76.7
North Bab.	64.8	North Bab.	70
Copiague	56.3	Copiague	56.2
Amityville	44.9	Amityville	47.5
Wyandanch	32	Wyandanch	29.5
			30.9

* Indicates General Education Results without Students with Disabilities

8th Grade Math			
District Pass Rate 2009-2010	District Pass Rate 2010-2011	District Pass Rate 2010-2011	District Pass Rate 2011-2012
H H Hills	83.7	H H Hills	87.9
Babylon	75.5	West Bab.	75.3
West Bab.	74.7	Babylon	72.6
Deer Park	65.6	Deer Park	66.7
Lindenhurst	62	Lindenhurst	65.7
North Bab.	48.1	North Bab.	54.8
Amityville	39.6	Copiague	41.7
Copiague	35.3	Wyandanch	24.8
Wyandanch	15.1	Amityville	24.6
			23.8